

MAC INSTRUCTIONS FOR VPN CONNECTION TO CAMPUS

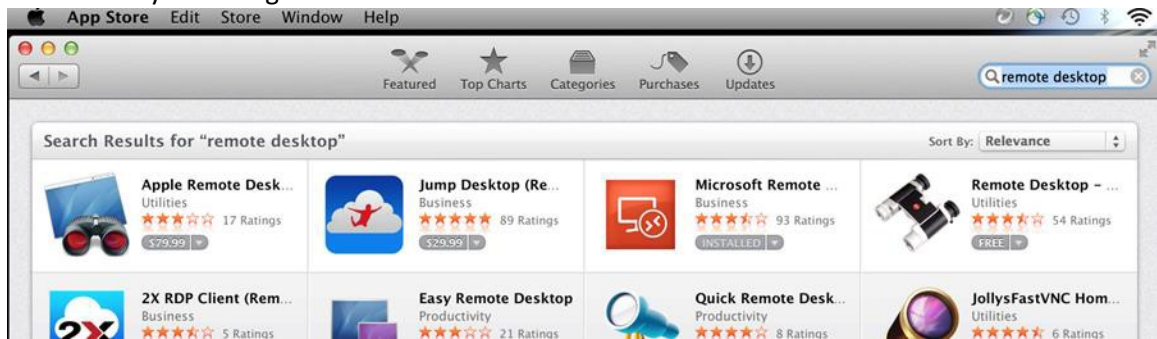
These instructions are intended for Faculty or Staff that need access to campus resources through the Virtual Private Network (VPN). If you have any questions or problems with instructions detailed here, please contact the IT Service Center at (806) 651-4357.

NOTE: While connected to the WTAMU VPN, you may not be able to access Internet resources from the computer you are connecting from – the computer you are using from off-campus. Once you have connected to VPN, you will have access to specifically-defined WTAMU resources.

INITIAL SETUP:

You will need an RDP client to remote to campus. Although there are other programs that will work for this, we will use Microsoft's Remote Desktop Connection. The following will detail how to obtain, install, and connect using this application.

1. Download Microsoft's Remote Desktop Connection (RDP) from the Apple app store. Install the RDP client by following the on-screen instructions.



2. Using **Safari**, navigate to <https://connect.wtamu.edu>. (Please note that you must use the Safari browser for this to work.) Enter your Academic credentials (same that you would use to log in to

your office PC) in the respective fields.

WTAMU VPN Login

User Name

Password

NOTICE TO USERS

This computer system is the property of West Texas A&M University. Only authorized users may login to this computer system. All unauthorized use is strictly prohibited and subject to local, state, and/or federal laws. Therefore, this system is subject to security testing and monitoring. Misuse is subject to criminal prosecution.

If you proceed to log into this system, you acknowledge compliance with *University Rule 24.99.99.W1 — Security of Electronic Information Resources* and all related University security policies located at <http://www.wtamu.edu/rules> and *University Rule 33.04.99.W1 — Rules for Responsible Information Technology Usage*. There should be no expectation of privacy except as otherwise provided by applicable privacy laws.

3. Once you log in, you will see a status of the install process.

CISCO Cisco AnyConnect VPN Client

WebLaunch

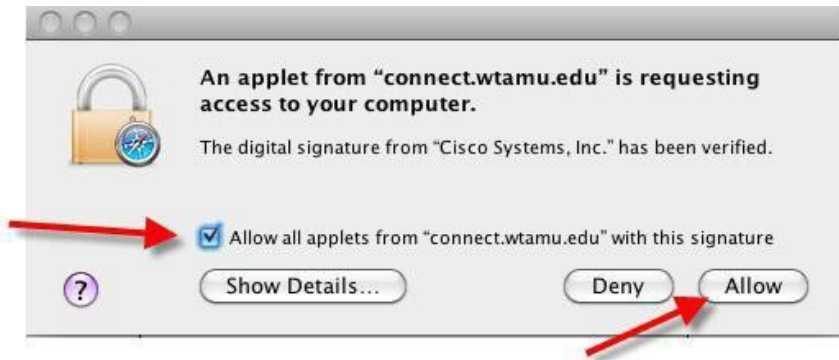
- Platform Detection
- ActiveX
- Java Detection
- Sun Java
- Download
- Connected

Using Sun Java for Installation

Security Warning
Attempting to launch the Sun Java applet which is digitally signed by Cisco Systems. In order to properly download and install the plug-in, be sure to click "Yes" on the security pop-up.

4. You may be prompted to **allow an applet** to install on your system. This is necessary for the VPN connection to be installed on your Mac PC. Check the box next to **Allow all applets...** and then

click the **Allow** button.

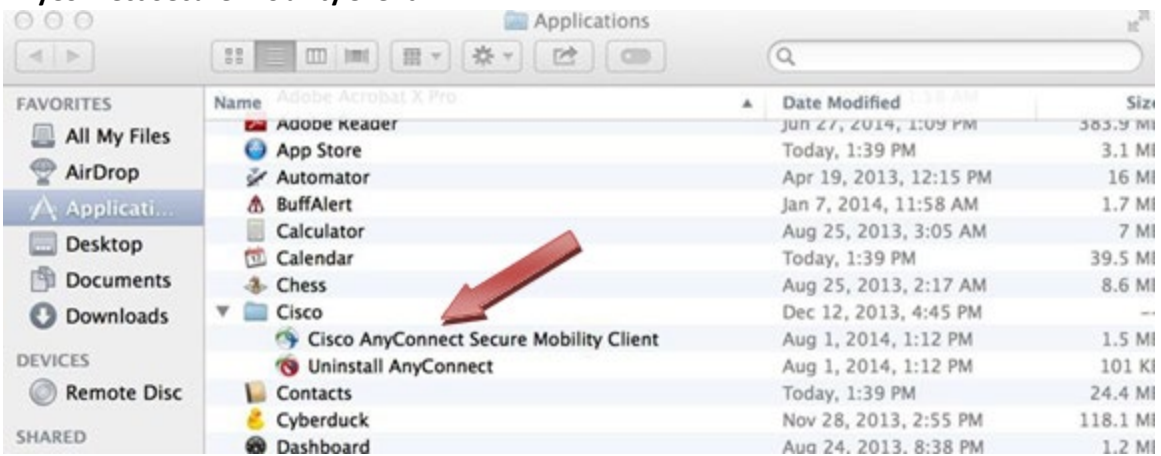


5. It is possible that you will be prompted for your User Name and Password to install the application. This is the User Name for you Mac PC, which could be different from your WT Academic credentials. Enter the credentials and click OK.
6. The Safari browser will now close, and you should see a new icon in the launch tray near your clock. You are now connected to the VPN.



To Connect in the future, you can launch the client from the site (<https://connect.wtamu.edu>) using the previous steps. Alternatively, you can launch the installed client directly from your local disk.

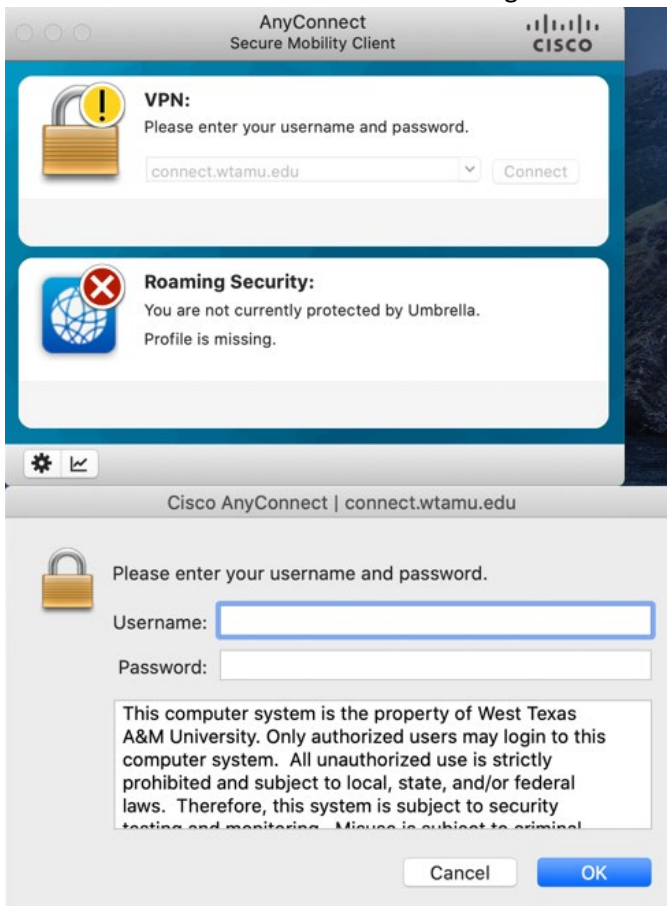
1. As with launching other applications on your Mac, navigate to **Go > Applications > Cisco > Cisco AnyConnect Secure Mobility Client**



2. This will launch the Cisco AnyConnect VPN Client. Enter **connect.wtamu.edu** into the text field like the following example, and then click **Connect**.



3. Enter your User Name and Password in the respective fields, and then click **OK**. You will be required to use DUO for two-factor authentication. AnyConnect will automatically push to your device if configured as your primary method. If you prefer to use a passcode please contact the IT Success Center for information on configuration.

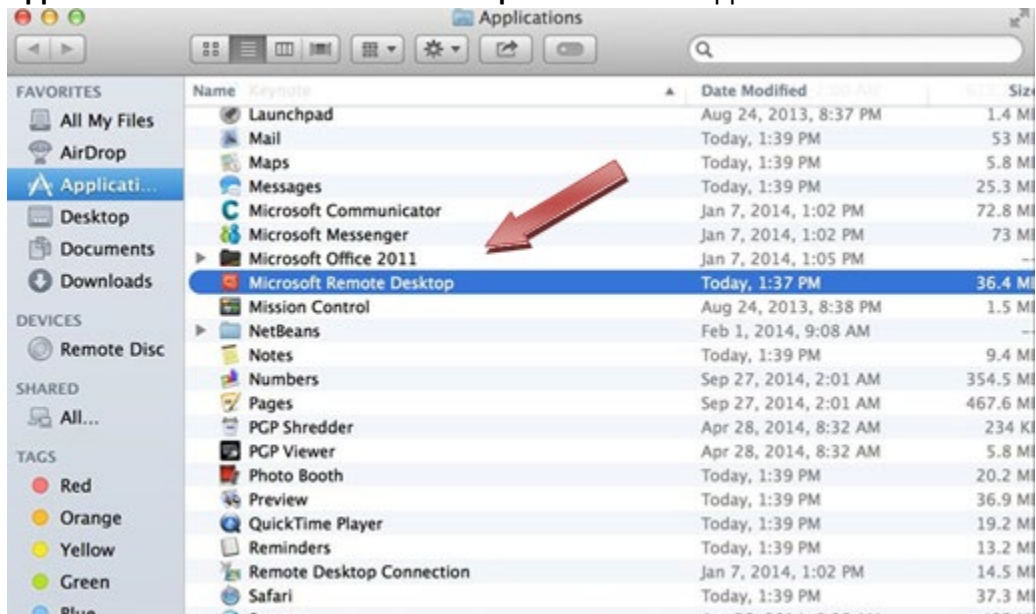


- Once the connection is established, you may minimize the AnyConnect window to the launch tray. You are now connected to the VPN.

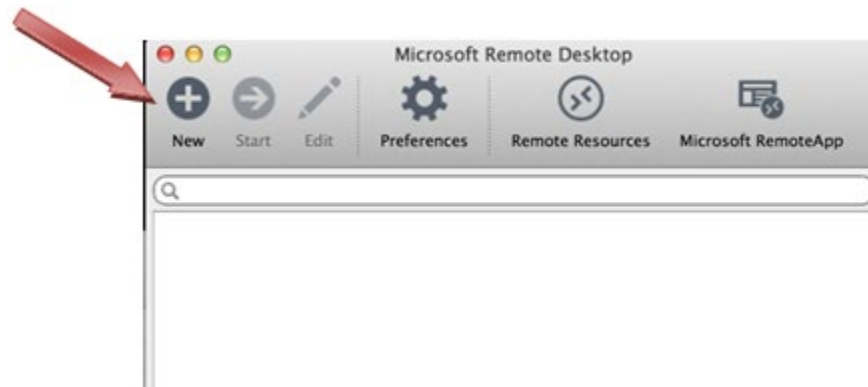


TO ACCESS YOUR COMPUTER THAT IS ON CAMPUS:

1. You should now be ready to launch the Microsoft RDP application. Navigate to **Go > Applications > Microsoft Remote Desktop** and launch the application.

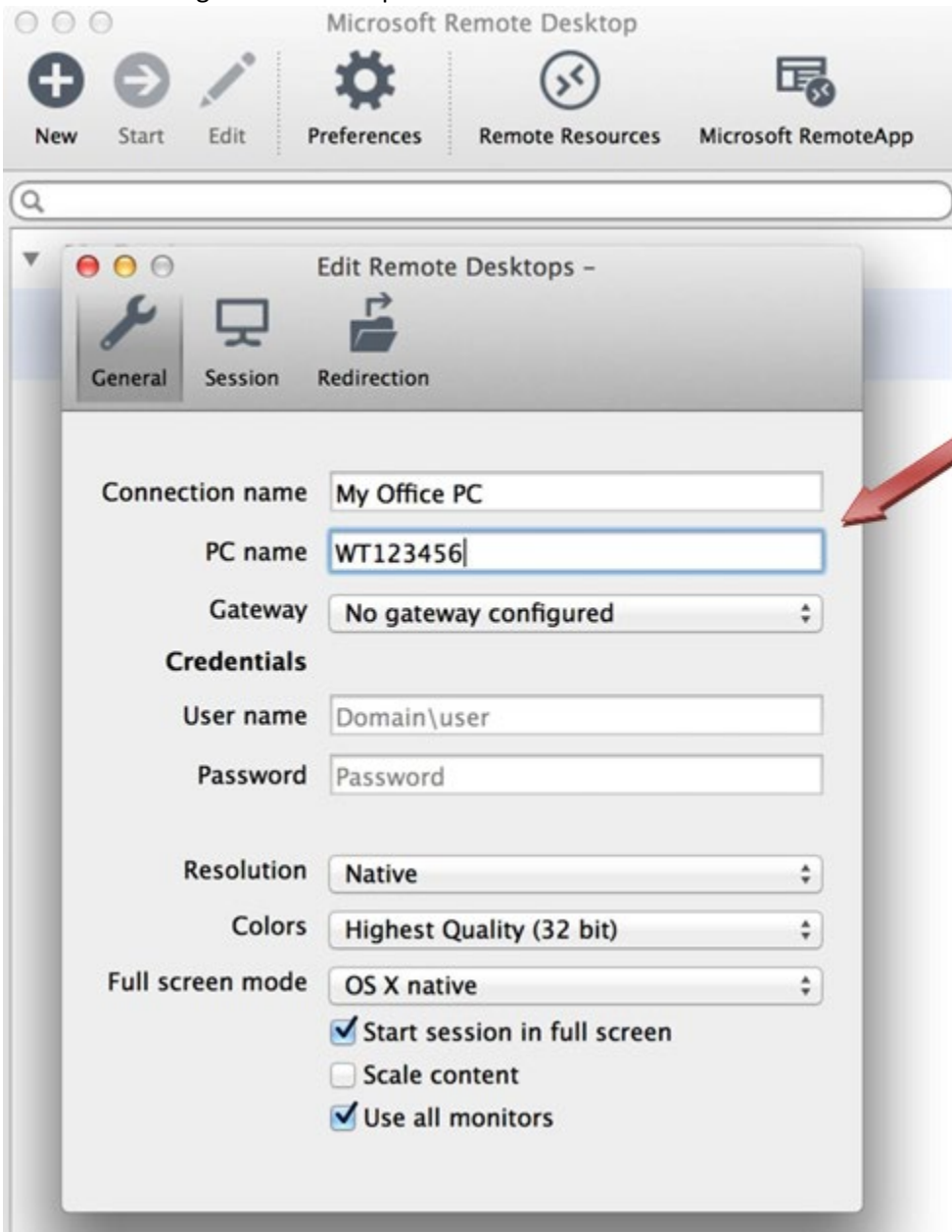


2. The Remote Desktop window will open. Select **New**.

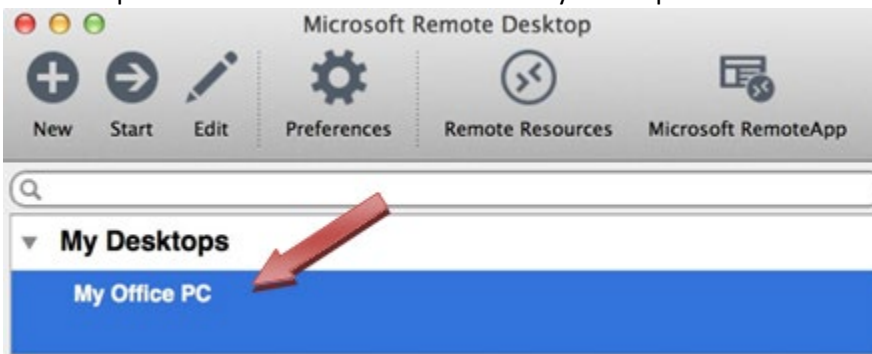


3. You will now add your office computer or terminal server to your list of connections. Create a name for the connection (such as My Office PC) and then type in the **WT ID#** or **IP Address** of your office computer in the **PC Name** field. Alternatively, you can enter **wtterm08** to access the WTAMU terminal server. These will be the only fields you will configure. After entering, close

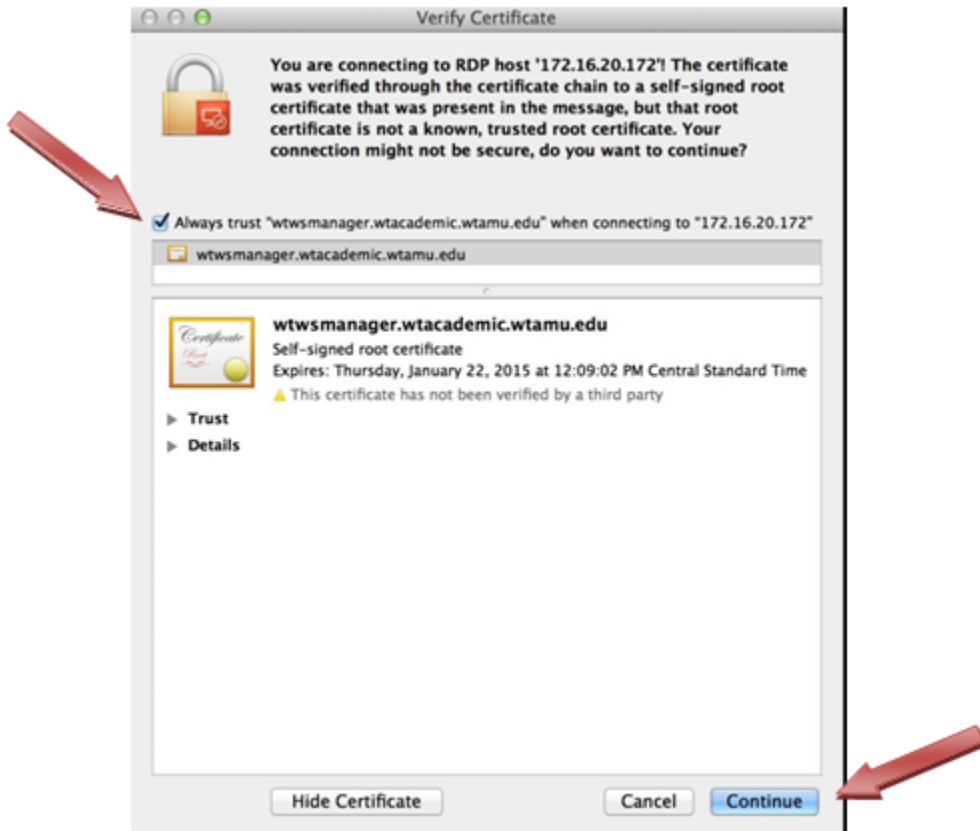
the window using the X in the top left corner.



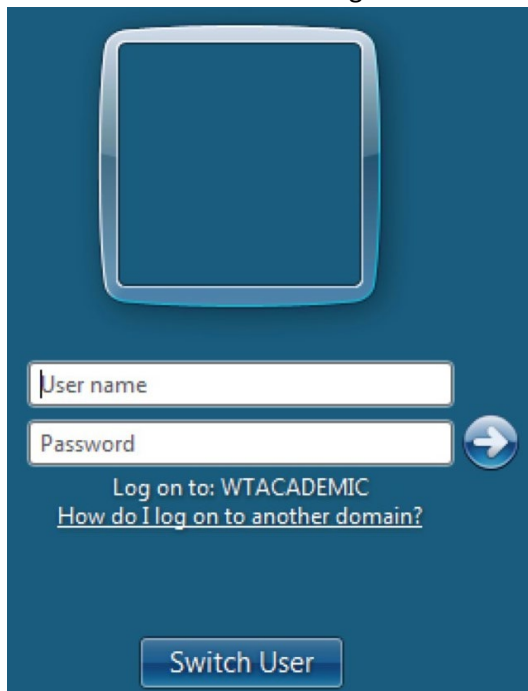
4. Your computer should now be listed under "MyDesktops"



5. Double-click on the computer to open the connection. You will be prompted to verify the machine's certificate. Click **Show Certificate** then check the box next to **Always Trust....** and hit continue.



6. After hitting **Continue** you will be prompted by our Computer Access Policy. Hit OK if you agree to continue to the familiar logon screen of the desktop environment.



7. When you have finished using the Terminal Server or your office workstation, click **Start** and choose **Log Off**. This will terminate your connection to the remote computer.
8. Click on the Cisco AnyConnect client icon in the tray (near the clock) and choose disconnect.

You should now be disconnected from the WTAMU VPN and may resume normal network activity. Should you have any questions, please feel free to contact the IT Service Center at ext. 4357 for assistance.