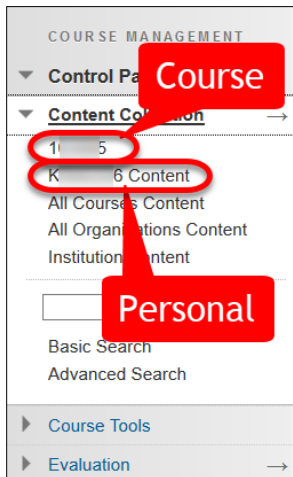


## PULLING VIDEOS FROM WTCLASS TO ADD TO ENSEMBLE

In order to add videos to Ensemble Video, you must locate the video file to upload into Ensemble. To locate and download the video file in WTClass complete the following:

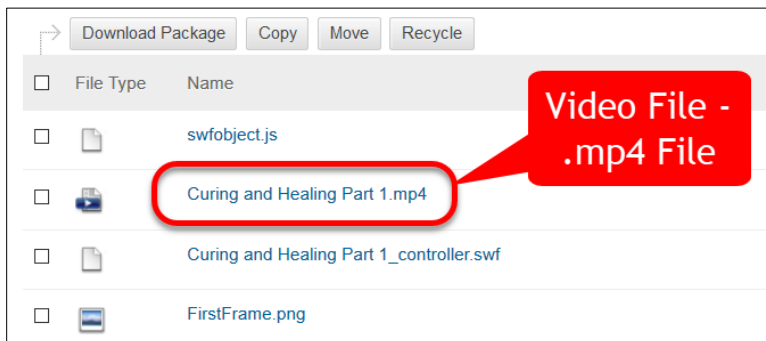
1. Access the Content Collection (either Personal or the Course Content Collection) where your video is located.



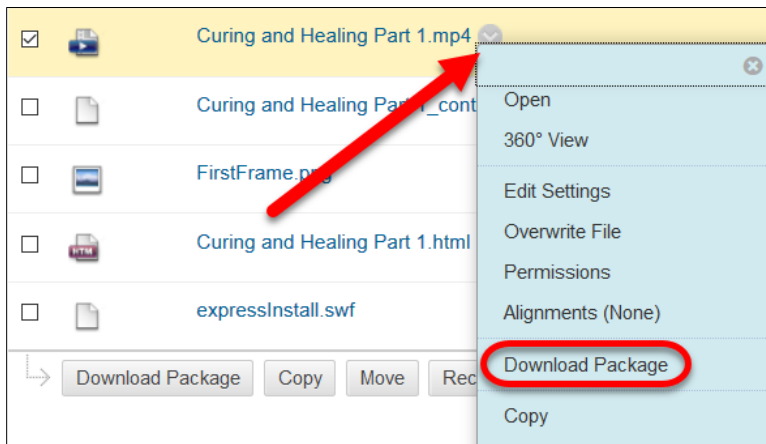
*Not sure where your video is located?*

- a. If you uploaded your video through Build Content < File – Your file is located in the Course Content Collection.
- b. If you uploaded your video through an Upload File or Upload Zip Files button – Your file is likely located in your Personal Content Collection.

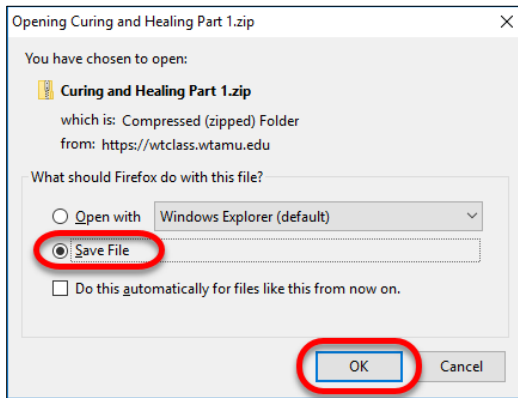
2. Locate the video file



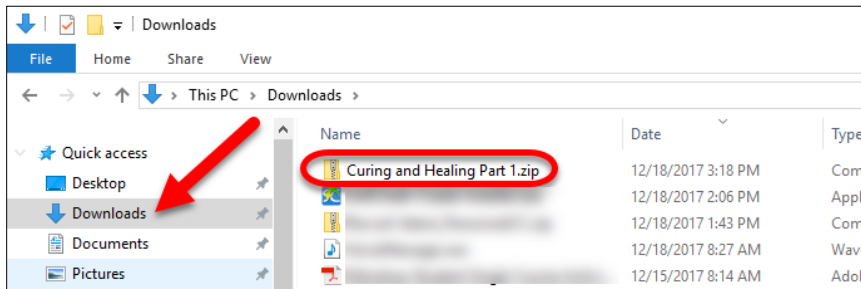
3. Select the dropdown menu that appears next to the video file and select **Download Package**.



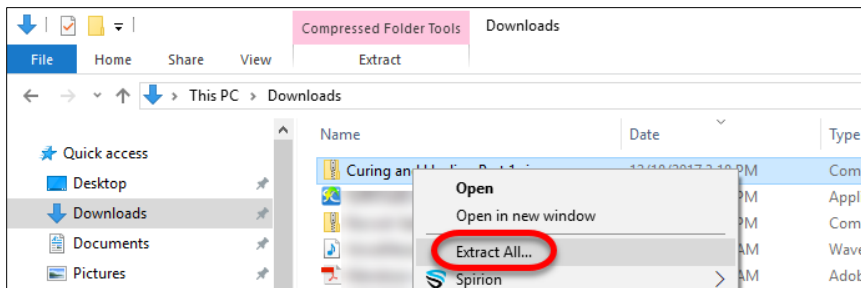
4. Save the file.



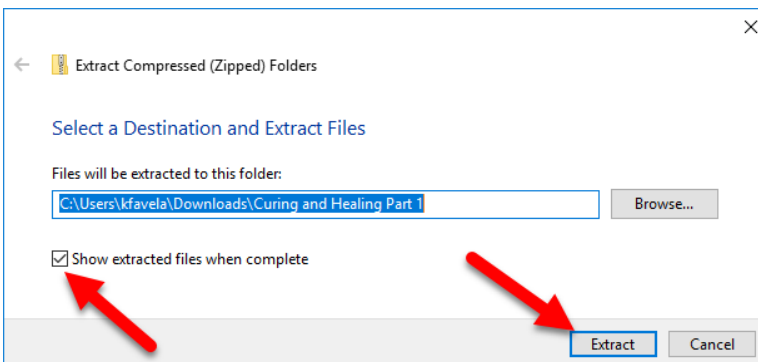
5. Open the File Explorer (folder icon typically found on task bar), and access the Downloads folder (or whatever location you saved the zip video file to).



6. Right-click on the zip video file and select **Extract All...**



7. Ensure that the option for **Show extracted files when complete** is checked, and then select **Extract**.



8. The file that appears in the window can be dragged into Ensemble Video on the Upload Video page.