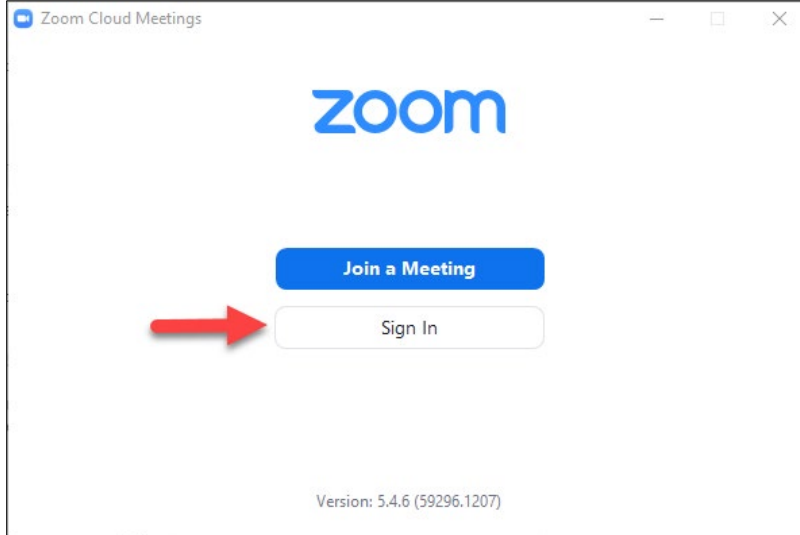
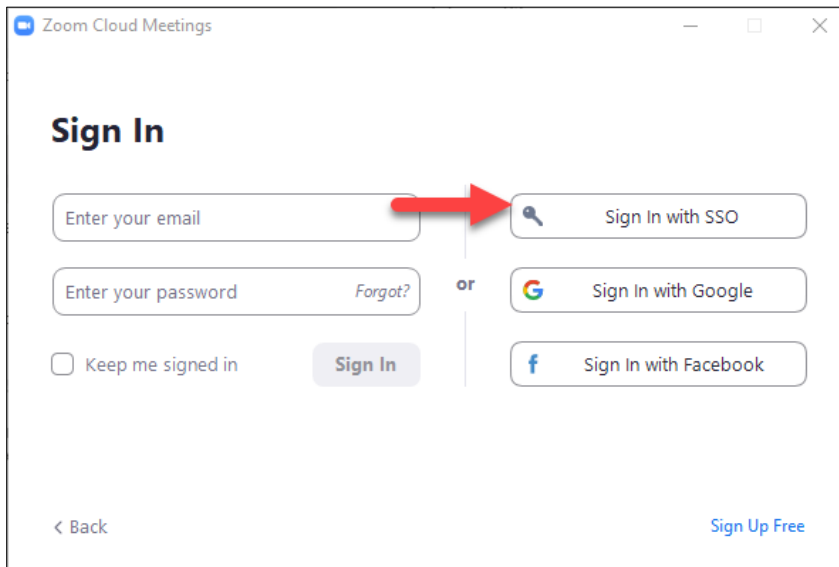


JOIN ZOOM MEETING AS A PARTICIPANT IN THE ZOOM CLIENT DESKTOP

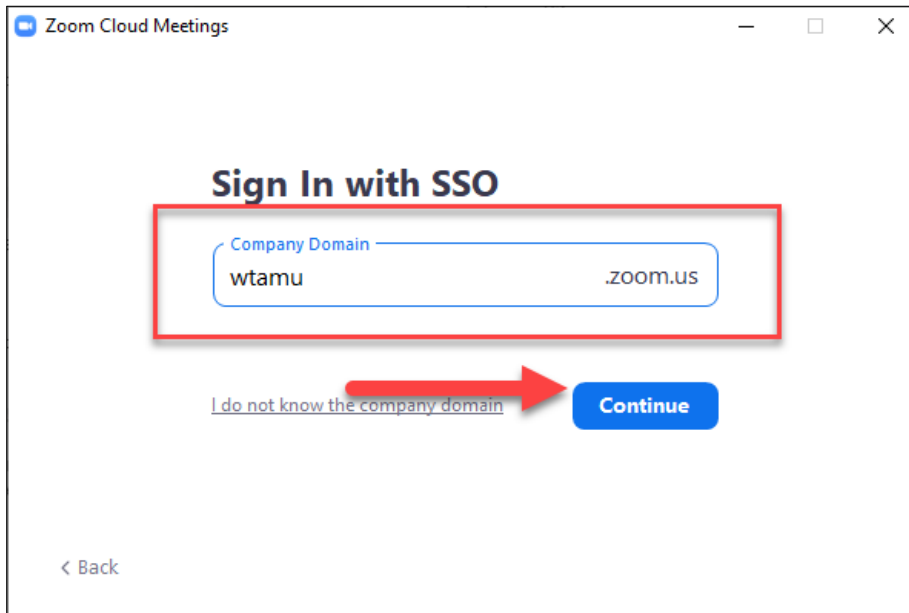
1. **Sign in** by clicking on your zoom app located via desktop applications.



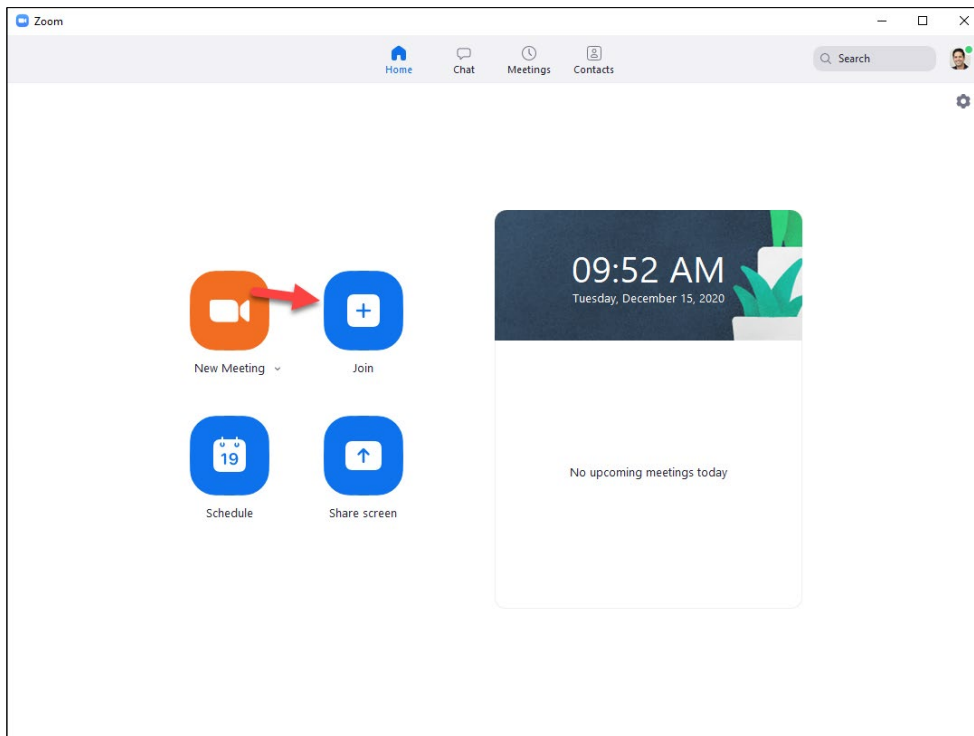
2. Select **Sign in with SSO**.



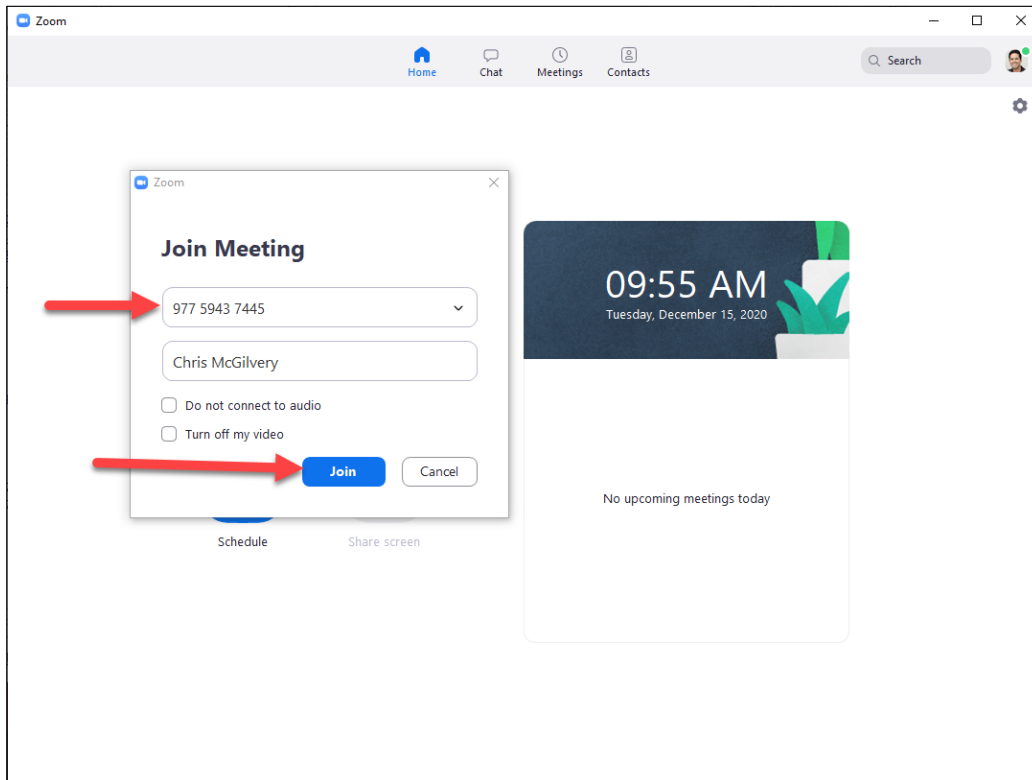
3. Type in **wtamu** and click continue. Sign in using your WTAMU credentials.



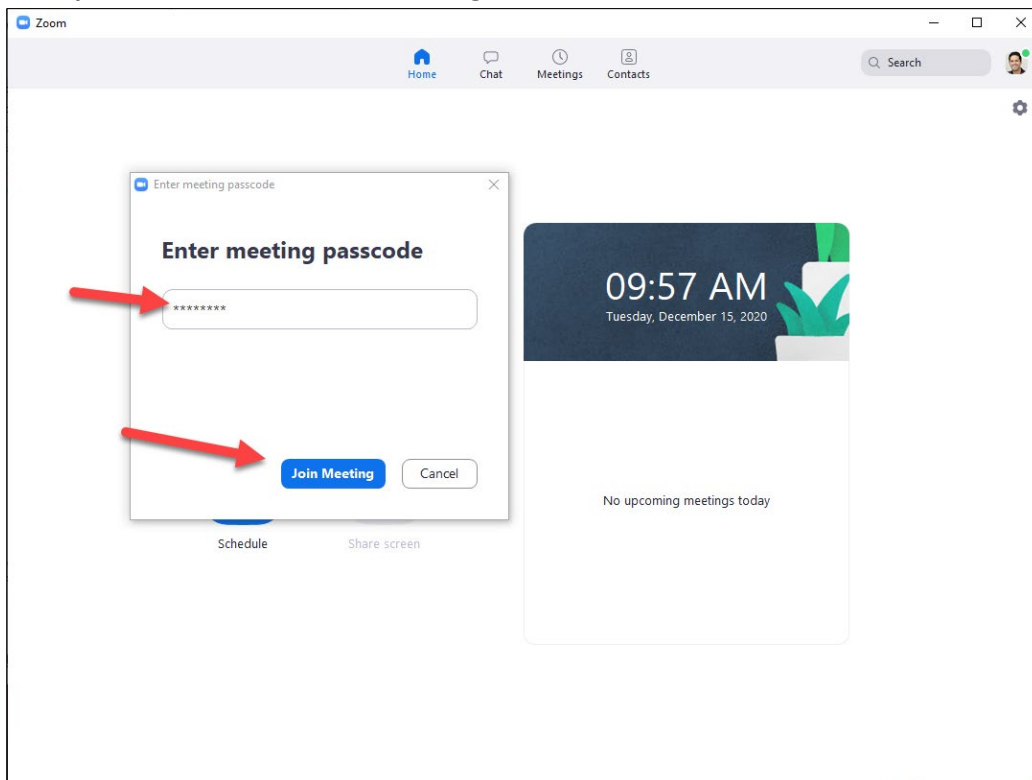
4. Click **Join**.



5. Enter **Meeting ID** and select join.



6. Enter **password** and select **Join Meeting**.



7. The meeting host will let participants in the meeting once they start the zoom meeting.

